



PERFORM IN THE MAGIC at DISNEYLAND PARIS APPLICATION PACK

We are going to Disneyland Paris and want YOU to come along!

If you are between 8 – 18 on 1st January 2021, join us and create memories of a lifetime as you perform in the heart of Disneyland – on one of the Disney stages - in front of thousands of Disney guests as well as your family and friends!

Not only that, but you will also get a chance to take part in a workshop led by Disney creatives as well as enjoying endless amounts of time in the Disney Parks!

As well as our students, we warmly encourage parents and families to join us in Paris. We have family packages available so parents and siblings can also be part of this magical experience.

On the following pages you will find all the information you need, along with details on how to apply and audition to be part of this project.

If you have any questions, please do not hesitate to contact us.

Best wishes,

Your Simply Theatre Academy Team
T: 022 860 0528
E: academy@simplytheatre.com

Our Performance & Workshop

Become a Disney Performer for the day! With the Disney Performing Arts OnStage programme, our students will be given this unique once-in-a-lifetime performance opportunity, gaining a glimpse into Disney's world of entertainment.

Performing to members of public, as well as our supporters, our 20 minute musical theatre performance will be taking place on stage in the heart of Walt Disney Studios park on 22nd April (time TBC).

Not only this, our students will be given the opportunity to work with Disney professionals in a hands on session, focusing on performance techniques, professionalism and teamwork, while not forgetting a sprinkling of Disney Magic – all aimed at reinforcing the skills required for great performances.

Our Schedule

Friday 15 October	5pm	Audition Deadline
Saturday 12 February	10am – 6pm	Rehearsals
Sunday 13 February	10am – 6pm	Rehearsals
Monday 14 February	10am – 6pm	Rehearsals
Tuesday 15 February	10am – 6pm	Rehearsals
Monday 18 April	10am – 6pm	Rehearsals (*in GENEVA)
Tuesday 19 April	10am – 6pm	Rehearsals (*in GENEVA)
Wednesday 20 April	10am – 6pm	Rehearsals (*in GENEVA)
Thursday 21 April	6.29am	Train from Geneva to Paris
	10.55 (approx.)	Arrive in Disneyland Paris. Take bags to hotel
	12.30pm – 9pm	Explore the Magic Kingdom
Friday 22 April	7.00am	Breakfast
	8.30am (tbc)	Disney Workshop
	10.00am	Explore Walt Disney Studios
	TBC	Performance at Disneyland
	9pm	Fireworks in Magic Kingdom
Saturday 23 April	8.00am	Breakfast
	8.30am	Explore the Magic Kingdom
	4.00pm	Return to Gare de Lyon
	6.21pm	Train from Paris to Zurich
	10.26pm	Arrival back in Zurich

Please note that for the Geneva rehearsals we will be arranging accommodation for the students with host families of Geneva cast members. You are welcome to make other arrangements should you wish.

Our Accommodation

Accommodation will be in either Disney's Hotel Santa Fe or Disney's Hotel Cheyenne.

Hotel Santa Fe

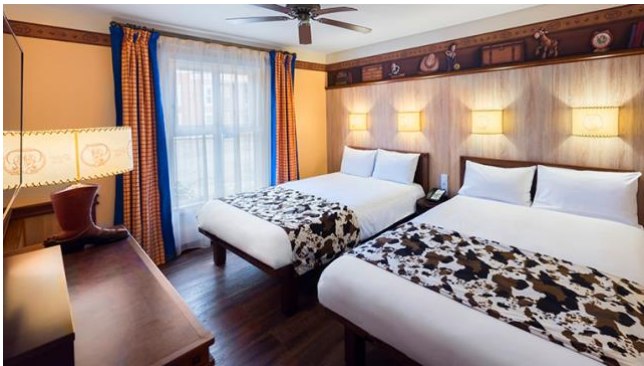
Discover this oasis of comfort on Route 66, where a Santa Fe-themed Hotel delivers classic Disney value and hospitality.

Zoom over to this hotel inspired by the world of Disney-Pixar's Cars and unwind on Route 66 with some warm American Southwest hospitality. Rooms all have a Disney-Pixar's Cars theme. They come with 2 – 4 beds, Disney and international TV channels and a ceiling fan.



It's just a 20 minute walk away, or a few minutes by free shuttle, from the Parks.

Hotel Cheyanne



Saddle up for the best of the wild west! Cowboys and cowgirls can hitch their horses at this lively frontier stop-off. The newly refurbished air-conditioned Texas rooms are Toy Story-themed with 2 – 4 beds. Disney and international TV channels and a ceiling fan.

It's just a 20 minute walk away, or a few minutes by free shuttle, from the Parks.

Our Travel

For students who are coming as part of our 'fully chaperoned' package, train travel is included in the total price. For those who are coming as a family, we realise that every family is different. As such, we are not including travel in those packages. Some people may wish to drive, some may wish to fly and some may wish to join us on the train. The train times above are currently for guidance only. If you wish to join us on the train we can arrange travel for you at an additional cost.

Our Food & drink

Our package includes a continental breakfast in the hotel. For chaperoned packages, lunch and dinner are also included.

Our packages

There are two options to choose from when signing up for this experience:

- 1) **FULLY CHAPERONED*** – Our Simply Theatre staff will take your child to Paris and back.

In groups of no more than 6, students will be chaperoned throughout their time with us – in the parks, at mealtimes and in the hotel. Students will stay with 1 or 2 other students of the same sex and of a similar age and their supervisors room will be nearby. Our staff can also look after spending money and ensure that your child has the best possible time with us, being with their friends and enjoying the Disney experience!

- 2) **NON-CHAPERONED** – you are responsible for your child at all times, aside from when they are in rehearsal, performance or workshop with us. You would need to make sure they are with us at the correct times when needed. They would stay with you in your room but would be welcome (along with you) to join us for group meet-ups (some meals, rides and photo opportunities) throughout our time at the parks

*The fully chaperoned package is only available for ages 10+

The cost

The cost of the Disney experience includes the following:

- 7 rehearsal days in the lead up to the performance
- Staff support in the parks and hotel all for students and supporters
- 24/7 Supervision (for Chaperoned students)
- Travel (for Chaperoned students)
- All meals (for Chaperoned students)
- Show t shirt and hoodie
- Accommodation & continental breakfast
- 3-day park tickets & Extra Magic Hours
- Performance on a Disney Stage
- Professionally edited video and photographs of the performance
- A Disney Performance Workshop, led by the Disney Creative Team
- Souvenir Lanyard, park ticket holder, drawstring bag, water bottle, valuables holder

We have the following packages available for just the student, or student + any combination of additional family members. If you require more than 4 additional spaces, please contact us for a bespoke price.

	Student	Student + 1	Student + 2	Student + 3	Student + 4
	(total: 1)	(total: 2)	(total: 3)	(total: 4)	(total: 5)
CHAPERONED	CHF1,950.00	CHF2,850.00	CHF3,350.00	CHF3,750.00	CHF4,350.00
NON-CHAPERONED		CHF2,200.00	CHF2,800.00	CHF3,300.00	

What is not included in the non-chaperoned package:

- 24/7 staff supervision, travel, lunch, dinner, drinks

Payment Schedule

10% of the total amount is due on accepting your place. The balance is due on 31st January 2022. Please note that this is the last date that we can make changes to the booking without incurring additional fees.

The audition

If you would like to audition to be part of this once-in-a-lifetime experience, you need to:

- Perform a song of your choice to backing track (not vocal track). This can be a Disney song, or something else in a similar style.
- Learn then perform the following dance routine:
 - [For ages 8-11 click here](#)
 - [For ages 12+ click here](#)

You will need to film your audition and then upload it to the video hosting site of your choice (YouTube, Vimeo etc) on a private link. Only after you have done this should you complete the online application form. You will be asked as part of that application to share the link to your video audition with us.

The deadline to submit your application is **5pm on 15th October 2021**. You will be notified by Friday 29th October if you have been successful or not in being part of this experience.

TIPS FOR YOUR VIDEO AUDITION:

- Make sure you are confident with both your pieces – dance and song.
- Have someone in the room to assist you in pressing play for the tracks. Introduce yourself to camera and then perform your song, followed by your dance.
- Make sure you film with a plain background if possible, and in full body (not head and shoulders). If a plain background can't be achieved, you must make sure there is no light behind you (close curtains for example) and that you are well lit.
- You should film in one take. Once done, thank the panel for watching and then end your video.

Terms and Conditions

- All students must have the permission of a parent/guardian in order to participate.
- The application form and audition must be received by the Academy office no later than Friday 15th Oct. Applications received after this date may not be accepted.
- The completion of the form is a commitment to pay for the trip in full.
- Due to the nature of the trip, no refunds will be offered once a place has been booked, unless we are able to get a refund through Disney's Terms & Conditions (a copy of which is available on request).
- Simply Theatre are not a travel agency. We are organizing travel and accommodation to facilitate the performance and workshop in Disneyland Paris.
- Each cast member agrees to attend all rehearsals unless agreed at the time of applying with the Production Team.
- Parents take the responsibility to provide their child with their own travel and international health insurance. We will not be able to offer any refund if a student is not able to join us due to contracting COVID or any other such illness. You may be able to get bespoke insurance against this – check with your provider.
- Simply Theatre Academy do not accept responsibility for any items lost or stolen during the trip.
- Simply Theatre does not accept financial responsibility for Acts of God. This includes but is not limited to the cancellation of travel, accommodation and the possibility of

extra nights' accommodation if delayed due to circumstances beyond our control. If extra costs are incurred, parents will be asked to cover this.

- If students do not arrive at the train station meeting point by the pre-agreed time, they may be refused participation.
- Simply Theatre Academy will be enforcing a no alcohol or smoking rule for all students on this trip. We are aware that some students may be legally allowed to smoke or to drink alcohol. However, in the interest of team unity it will not be permitted, as such activity will lead to dividing groups. If any student or parent feels that this will pose a problem, please discuss this with us in advance of the trip.
- If selecting the Chaperoned option, we cannot accept students on the trip unless we have parental consent to act on their behalf in the case of a medical emergency. You must inform us of any specific information which is not included on the Application and Medical Form (to be completed once a place has been offered), but which applies to your child. We regret that any child arriving with a serious medical condition not previously reported, or which requires regular staff supervision, may be sent home without any refund of fees.
- We are hopeful that there will not be the need to discipline students on this trip. The students will be expected to be responsible for their own behaviour and actions, as well as to follow the rules imposed by Simply Theatre. In cases where students do not follow these rules, or their behaviour threatens the safety of others or the running of the project students will be disciplined as follows:
 - In the first instance of significant detrimental behaviour, a conversation will take place with a Simply Theatre supervisor and a first warning will be given.
 - In the event that there is a further instance of detrimental behaviour, another conversation will take place with a Simply Theatre Supervisor, a second warning will be given and will be reported to their parents.
 - In the event that there is a further repeat of detrimental behaviour, this matter will be discussed with the parents and the student will be requested to return home. Any extra costs associated with repatriation will be borne by the parent of the student concerned.
 - Simply Theatre reserve the right to skip any of the above steps, depending on the extent and severity of the behaviour

If you have any further questions, please don't hesitate to contact us. Once accepted onto the project we will be providing you with much more detailed information surrounding logistics, plans and timings.